

SAMANA
GREENFIELD

SAMANA

DEVELOPERS



WHERE PURPOSE SHAPES EVERY SPACE

SAMANA's legacy is rooted in a singular vision—to craft environments that elevate everyday life. Over three decades, we've transformed that vision into a portfolio of communities that stand as benchmarks of design, purpose, and aspiration.

From idea to execution, we pursue progress with intention and purpose, fusing innovation, aesthetic clarity, and community thinking into every development. The result is more than architecture. It's a curation of refined lifestyles that inspire, endure, and lead the way forward.

Where Complete Control *Meets* Timeless Quality



SAMANA's end-to-end integration means no detail is outsourced, ensuring absolute control over timelines, costs, and uncompromised luxury.

DESIGN & PLANNING

Visionary concepts engineered for reality.

ENGINEERING & CONSTRUCTION

Structural artistry meets technical brilliance.

PROCUREMENT

Utilizing cutting-edge platforms to streamline sourcing and ensure unmatched consistency.

QUALITY CONTROL

Precision-led systems that track, review, and deliver quality.

CUSTOMER EXPERIENCE

End-to-end service with precision and care.



*Where calm
becomes
a statement*



Beyond the rush and spectacle lies a more grounded way of living. Set in Al Warsan, this address brings together elegant design, resort-style comforts, and a sense of calm that feels rare in the city. A place where connection exists - but never at the cost of peace.





The city at *your doorstep*



Al Warsan brings the best of city living within easy reach. From vibrant retail destinations and boutique shopping streets to cafés, fine dining, and entertainment spots, every lifestyle need is just minutes away.

Time proximity *from landmarks*

10
minutes
Dubai Safari Park

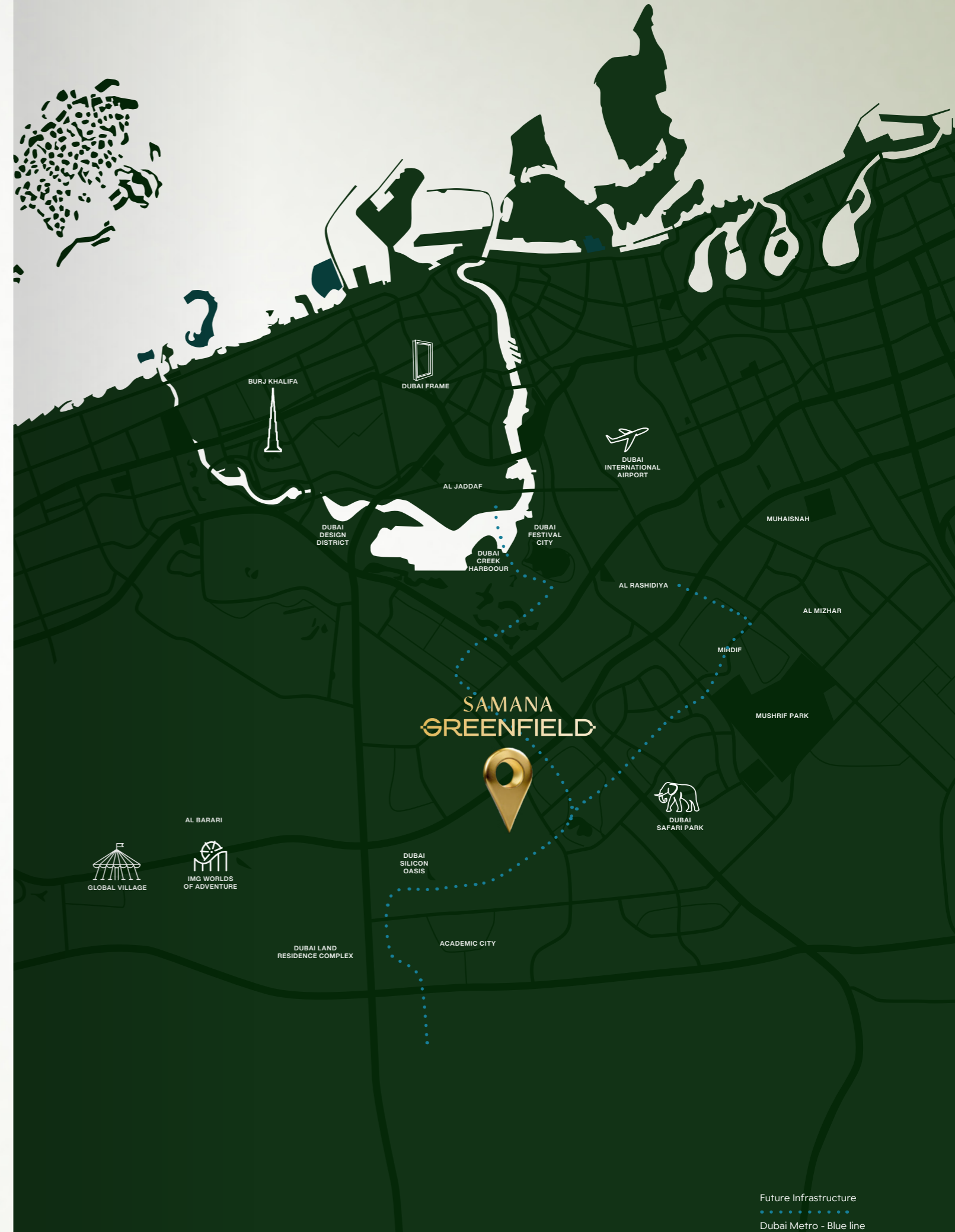
12
minutes
Academic City

15
minutes
IMG World of
Adventures

18
minutes
Dubai International
Airport

20
minutes
Global Village

22
minutes
Mushrif Park





Shaped *by the future*



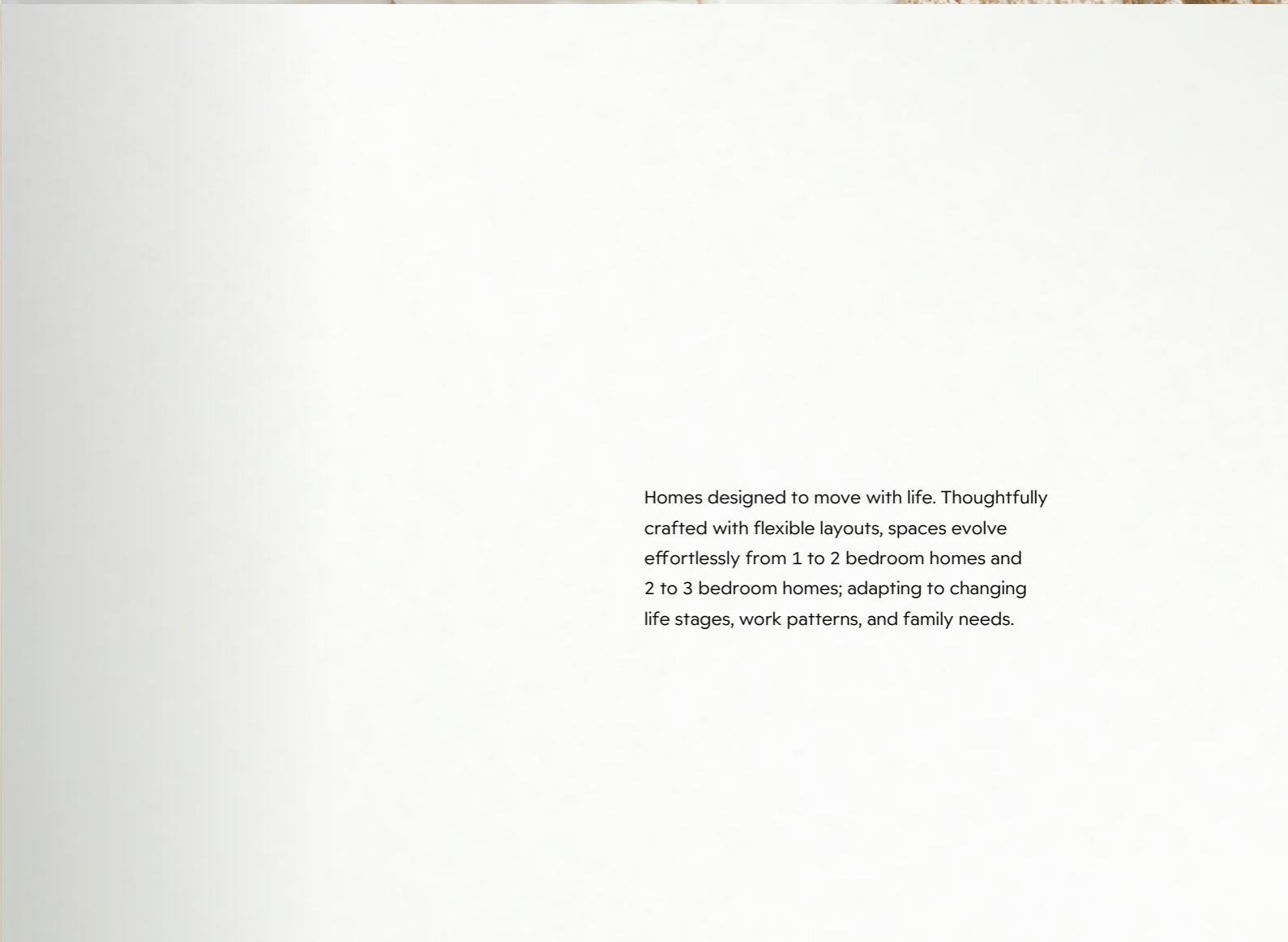
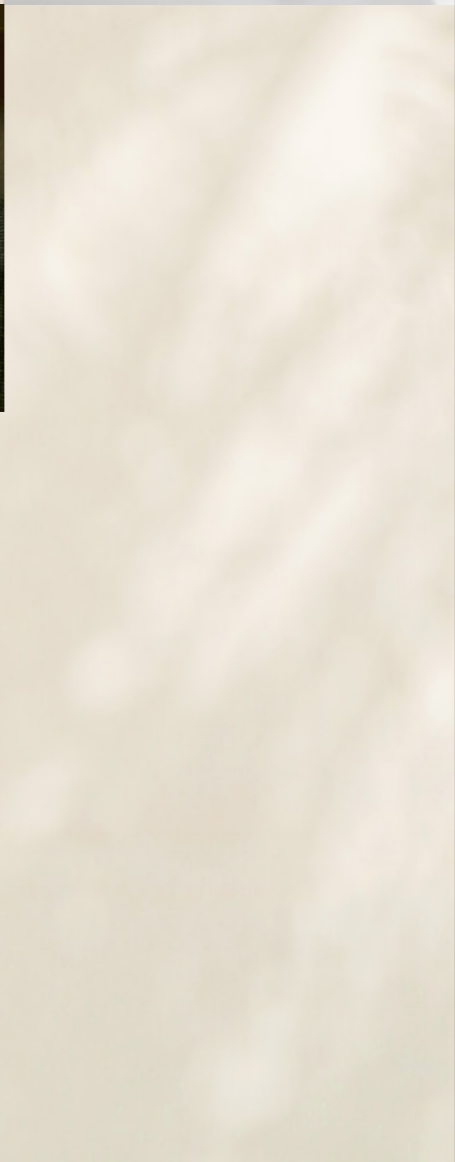
Surrounded by iconic destinations like Dubai Safari Park and Ras Al Khor Wildlife Sanctuary and aligned with Dubai's 2040 Urban Master Plan and the 20-Minute City vision, it's a location planned around the way cities evolve. With the Blue Line metro arriving by 2029, Al Warsan isn't just well-connected; it is where the future of urban living takes shape.





An address
framed by nature

Al Warsan is wrapped in nature—from the tranquil Warsan Lake to expansive parks and flourishing green corridors. It's a breath of fresh air in the city, where walkable landscapes and open spaces create a lifestyle that feels grounded, peaceful, and truly livable.



A home that
adapts to
the way you live

Homes designed to move with life. Thoughtfully crafted with flexible layouts, spaces evolve effortlessly from 1 to 2 bedroom homes and 2 to 3 bedroom homes; adapting to changing life stages, work patterns, and family needs.



INTRODUCING

SAMANA GREENFIELD

*Where calm becomes
a statement*



In a city defined by movement and momentum, SAMANA Greenfield offers a rare sense of pause. Rooted in greenery and designed for adaptability, it redefines modern luxury as space, calm, and intention rather than spectacle.

Thoughtfully planned homes evolve with life, while a composed, connected environment brings balance without compromise. This is a quieter expression of Dubai - where serenity, clarity, and room to grow come naturally.





*Calm
isn't promised,
it's planned*





SAMANA Greenfield's architecture reflects its core belief - that calm is the new luxury. A clean modern facade is softened by generous landscaping, open spaces, and a carefully balanced façade that feels light and breathable. Every element is designed to set a quiet, reassuring tone for life within.





*The quiet you
come home to*



Where space evolves *with your lifestyle*

At SAMANA Greenfield, homes are designed for the life ahead. Flexible layouts allow spaces to transform as your needs change.

Convertible Residences

1 to 2 bedroom homes and 2 to 3 bedroom homes.

A home that adapts, grows, and redefines possibilities within the same walls.





*Moments made
extraordinary*

From spaces that invite relaxation to thoughtfully designed areas that foster connection and well-being, every detail is designed to elevate daily living. Here, convenience meets elegance, and world-class amenities quietly enrich the experience.

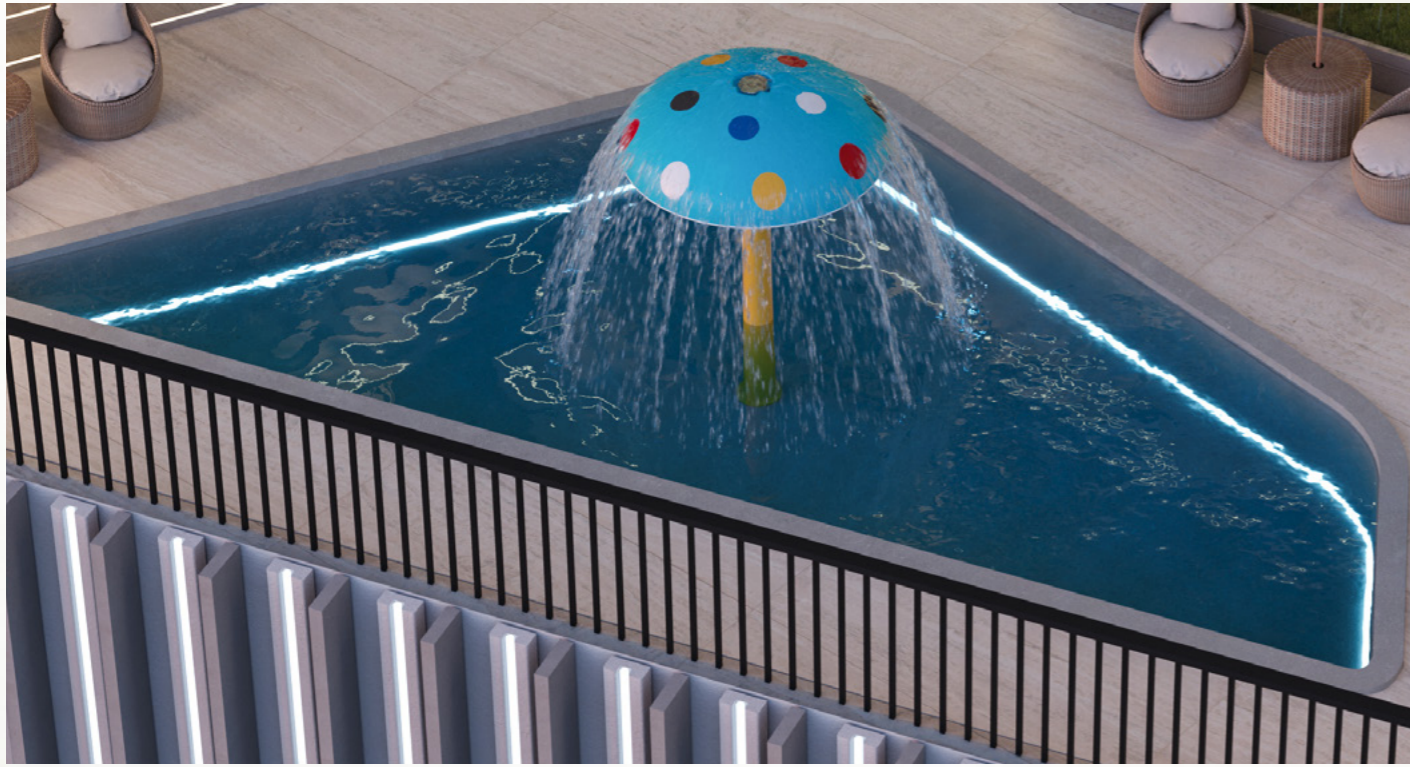
for
Ripples of Joy



Adult Pool

Jacuzzi

Kids' pool





for
Moments of Connection

BBQ area

Sunken seating

Pool deck

Outdoor cinema







for
Play and
Performance

Outdoor gym

Kids play area

Indoor Gym



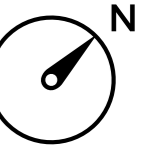
*The luxury of
thoughtful spaces*



Master plan

Floor plan

FIRST FLOOR

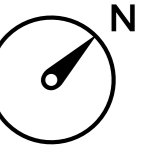


LEGEND:

- 1 BEDROOM
- 1 BEDROOM+STUDY
- 2 BEDROOM
- 2 BEDROOM+STUDY
- CIRCULATION
- SERVICES
- DUCTS
- AMENITIES

Floor plan

2nd - 14th FLOOR



LEGEND:

- 1 BEDROOM
- 1 BEDROOM+STUDY
- 2 BEDROOM
- 2 BEDROOM+STUDY
- CIRCULATION
- SERVICES
- DUCTS

Unit plan

1 BEDROOM TYPE 1



2nd - 14th TYPICAL FLOOR KEYPLAN

UNIT - 201 - 1401, 202 - 1402, 202 - 1402, 204 - 1404, 205 - 1405, 206 - 1406, 209 - 1409, 210 - 1410, 213 - 1413, 214 - 1414, 217 - 1417, 218 - 1418, 219 - 1419, 222 - 1422



1ST FLOOR KEYPLAN

UNITS - 101, 102, 104, 105, 106, 109, 110, 114, 115, 116

FEATURES

✓ CONVERTIBLE 2 BHK

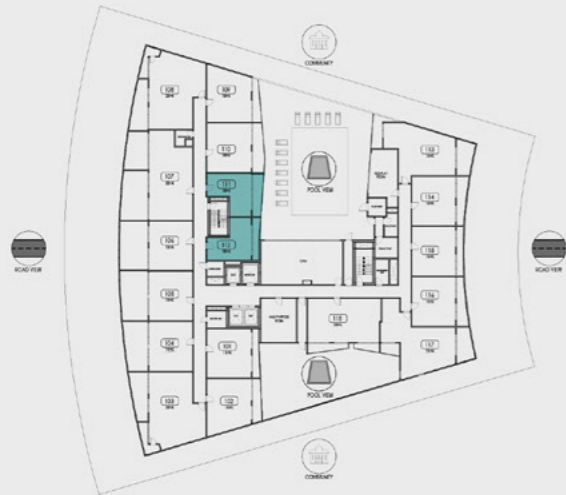
Disclaimer:
 1. All room dimensions are measured to structural elements and exclude wall finishes and construction tolerances.
 2. All dimensions have been provided by our consultant architects.
 3. All materials, dimensions and drawings are approximate. Information is subject to change without notice.
 4. Actual suite area may vary from the stated area. Drawings not to scale. The developer reserves the right to make revisions.
 5. For each unit type, unit sizes and details might be slightly different. Please refer to the sales and purchase agreement for the actual size of each specific unit.
 6. North direction as per the Keyplan



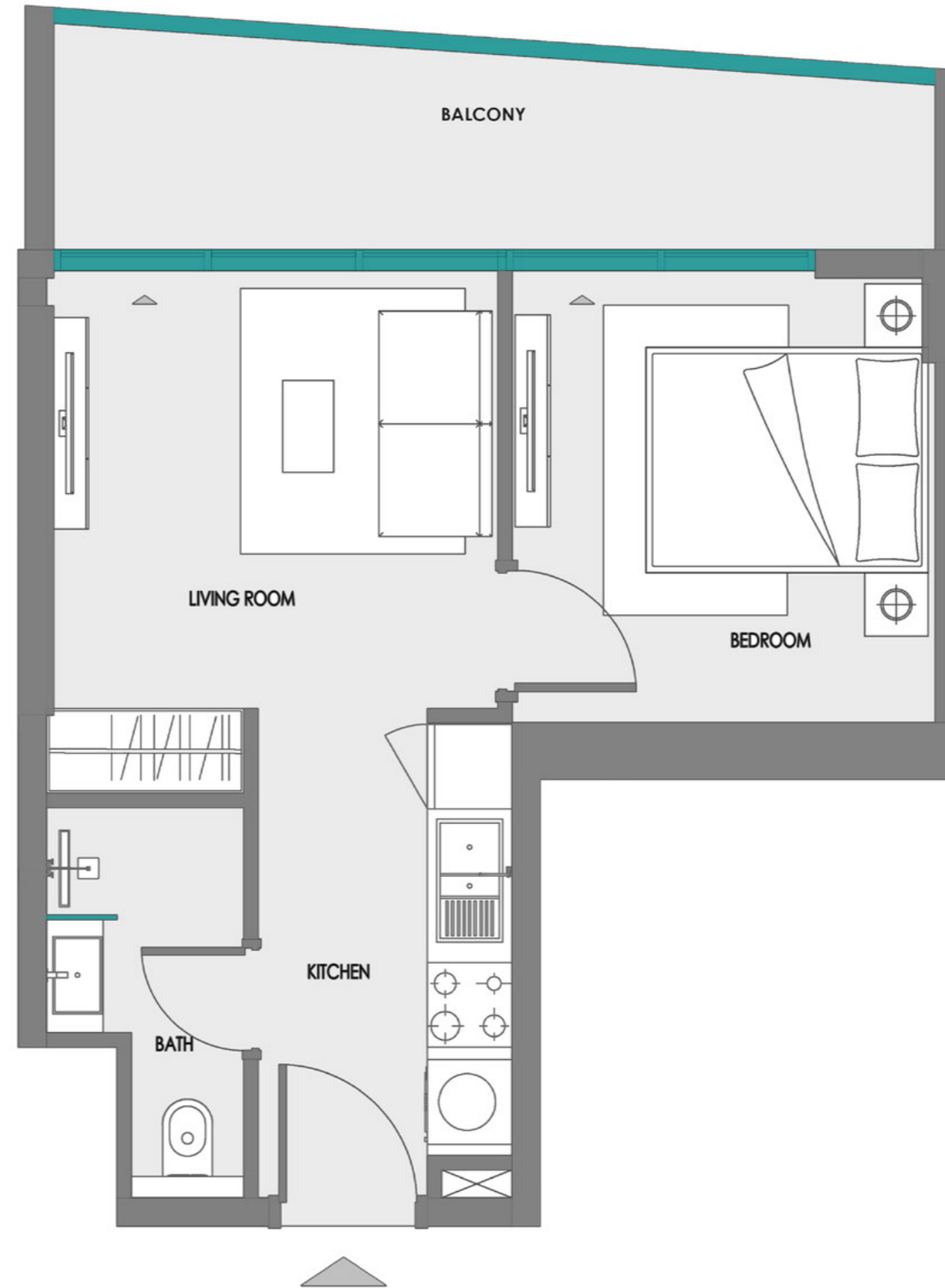
1 BEDROOM TYPE 2



2nd - 14th TYPICAL FLOOR KEYPLAN
UNITS - 211 - 1411, 212 - 1412



1ST FLOOR KEYPLAN
UNITS - 111, 112



Disclaimer:

1. All room dimensions are measured to structural elements and exclude wall finishes and construction tolerances.
2. All dimensions have been provided by our consultant architects.
3. All materials, dimensions and drawings are approximate. Information is subject to change without notice.
4. Actual suite area may vary from the stated area. Drawings not to scale. The developer reserves the right to make revisions.
5. For each unit type, unit sizes and details might be slightly different. Please refer to the sales and purchase agreement for the actual size of each specific unit.
6. North direction as per the Keyplan

1 BEDROOM + STUDY TYPE 1



2nd - 14th TYPICAL FLOOR KEYPLAN
UNIT - 216 - 1416

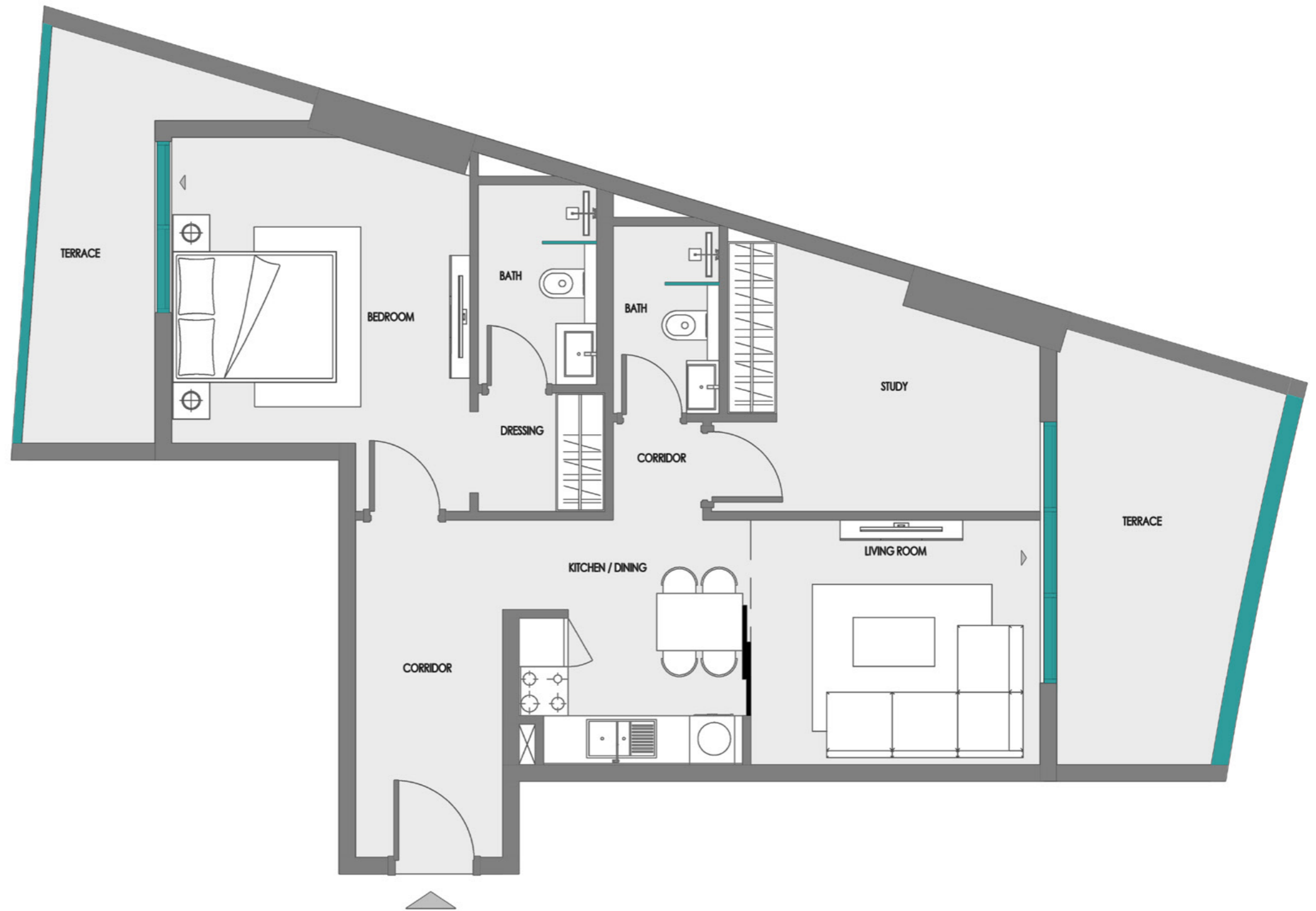


1ST FLOOR KEYPLAN
UNIT - 113

FEATURES

 CONVERTIBLE 2 BHK

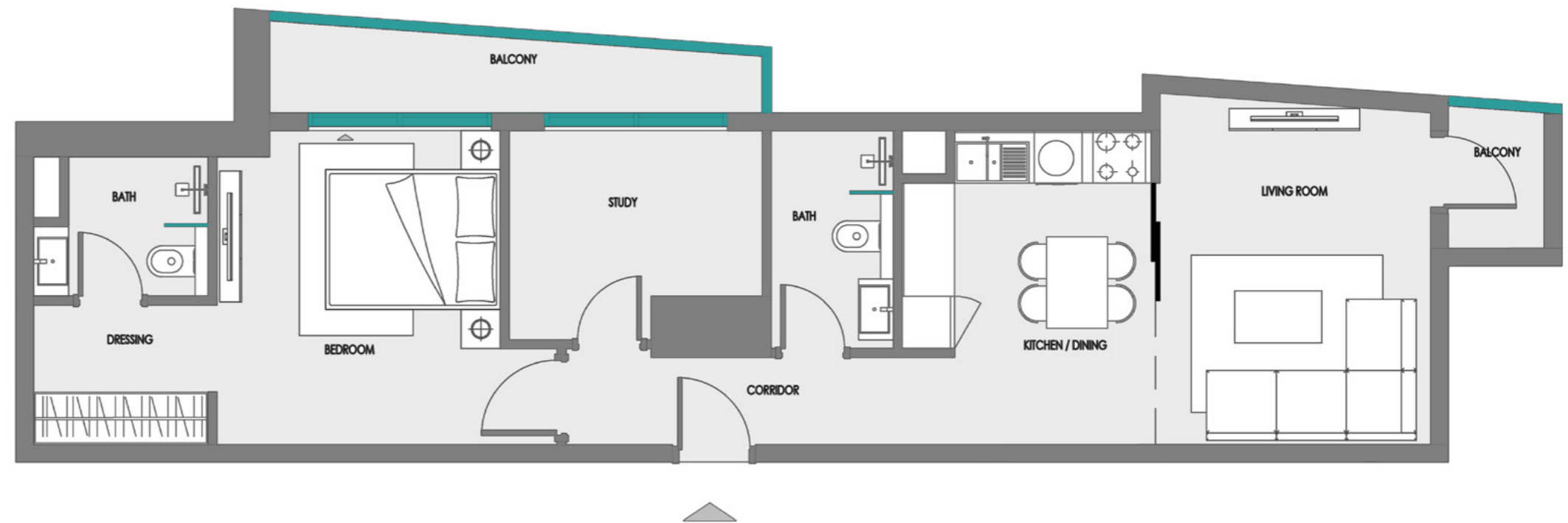
Disclaimer:
 1. All room dimensions are measured to structural elements and exclude wall finishes and construction tolerances.
 2. All dimensions have been provided by our consultant architects.
 3. All materials, dimensions and drawings are approximate. Information is subject to change without notice.
 4. Actual suite area may vary from the stated area. Drawings not to scale. The developer reserves the right to make revisions.
 5. For each unit type, unit sizes and details might be slightly different. Please refer to the sales and purchase agreement for the actual size of each specific unit.
 6. North direction as per the Keyplan



1 BEDROOM + STUDY TYPE 2



2nd - 14th TYPICAL FLOOR KEYPLAN
UNITS - 215 - 1415



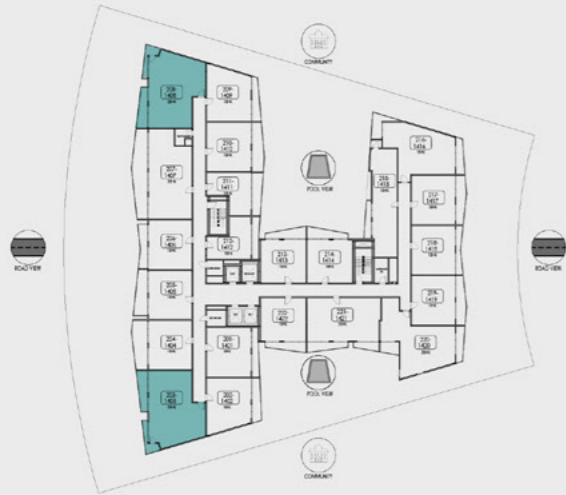
FEATURES

- ✓ CONVERTIBLE 2 BHK

Disclaimer:

1. All room dimensions are measured to structural elements and exclude wall finishes and construction tolerances.
2. All dimensions have been provided by our consultant architects.
3. All materials, dimensions and drawings are approximate. Information is subject to change without notice.
4. Actual suite area may vary from the stated area. Drawings not to scale. The developer reserves the right to make revisions.
5. For each unit type, unit sizes and details might be slightly different. Please refer to the sales and purchase agreement for the actual size of each specific unit.
6. North direction as per the Keyplan

2 BEDROOM TYPE 1



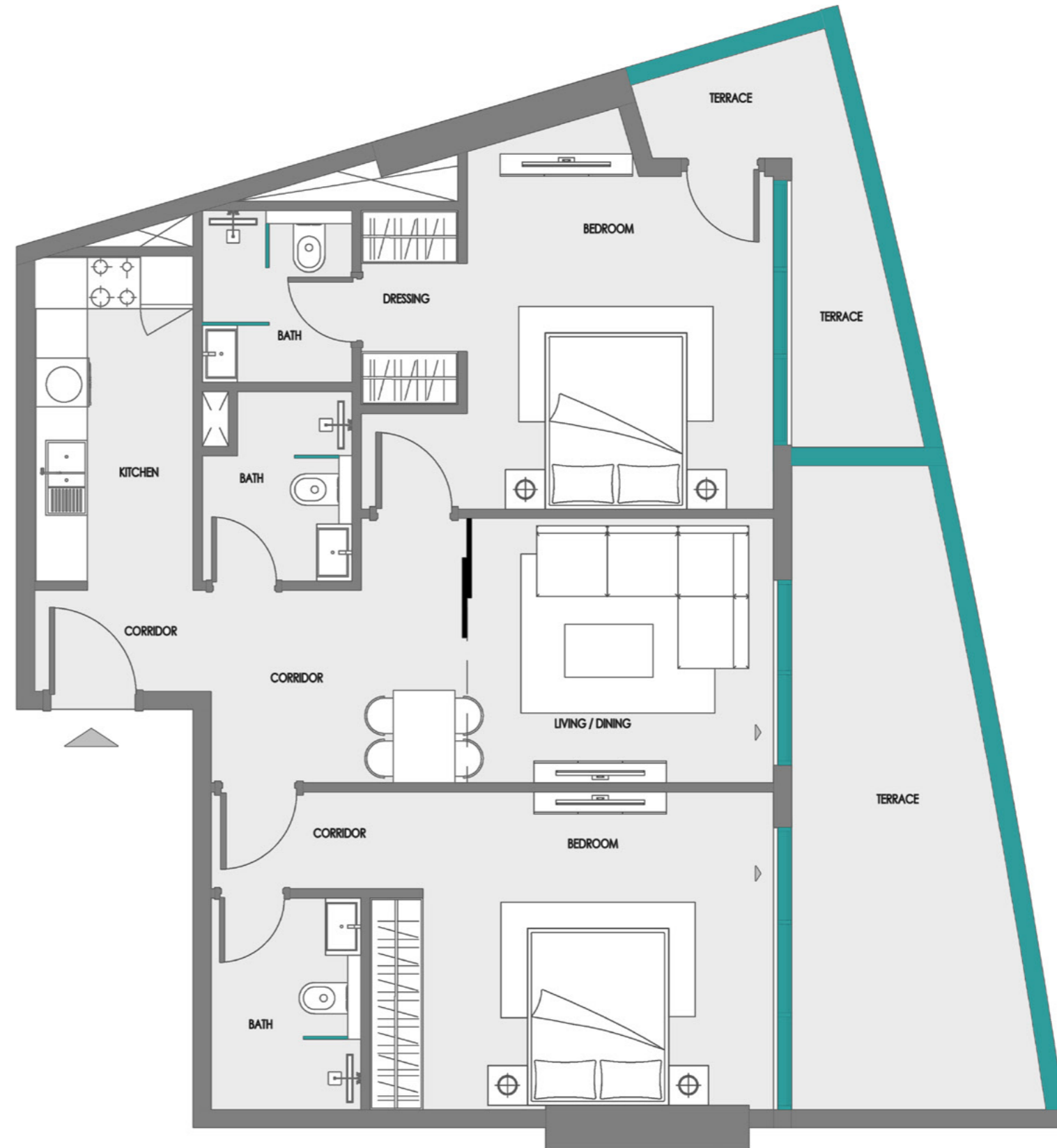
2nd - 14th TYPICAL FLOOR KEYPLAN
UNITS - 203 - 1403, 208 - 1408



1ST FLOOR KEYPLAN
UNITS - 103, 108

FEATURES

 CONVERTIBLE 3 BHK



Disclaimer:
 1. All room dimensions are measured to structural elements and exclude wall finishes and construction tolerances.
 2. All dimensions have been provided by our consultant architects.
 3. All materials, dimensions and drawings are approximate. Information is subject to change without notice.
 4. Actual suite area may vary from the stated area. Drawings not to scale. The developer reserves the right to make revisions.
 5. For each unit type, unit sizes and details might be slightly different. Please refer to the sales and purchase agreement for the actual size of each specific unit.
 6. North direction as per the Keyplan

2 BEDROOM TYPE 2



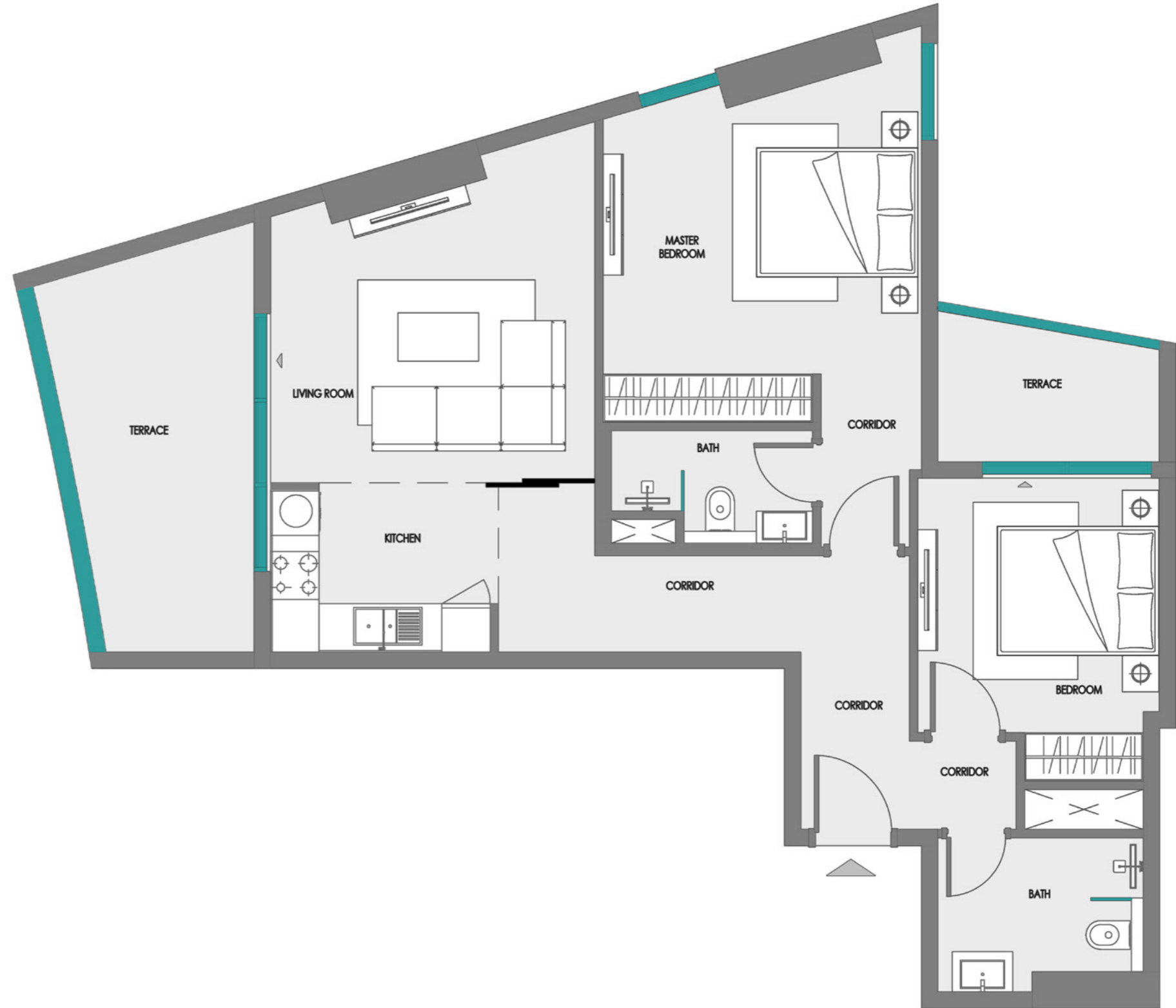
2nd - 14th TYPICAL FLOOR KEYPLAN
UNITS - 220 - 1420



1ST FLOOR KEYPLAN
UNIT - 117

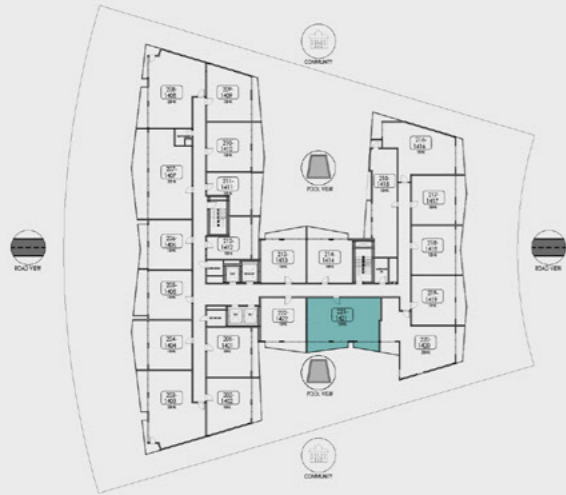
FEATURES

 CONVERTIBLE 3 BHK

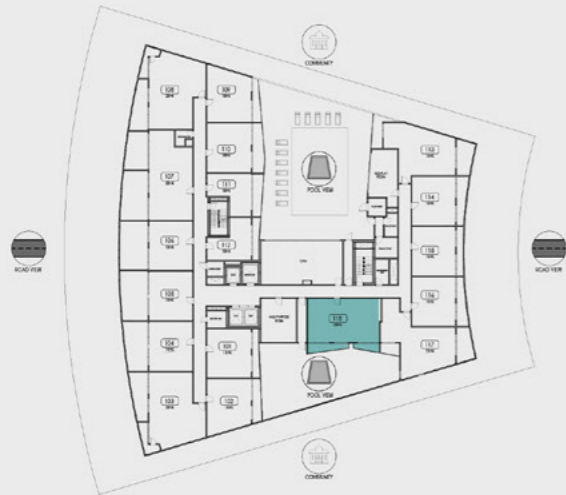


Disclaimer:
 1. All room dimensions are measured to structural elements and exclude wall finishes and construction tolerances.
 2. All dimensions have been provided by our consultant architects.
 3. All materials, dimensions and drawings are approximate. Information is subject to change without notice.
 4. Actual suite area may vary from the stated area. Drawings not to scale. The developer reserves the right to make revisions.
 5. For each unit type, unit sizes and details might be slightly different. Please refer to the sales and purchase agreement for the actual size of each specific unit.
 6. North direction as per the Keyplan

2 BEDROOM
TYPE 3



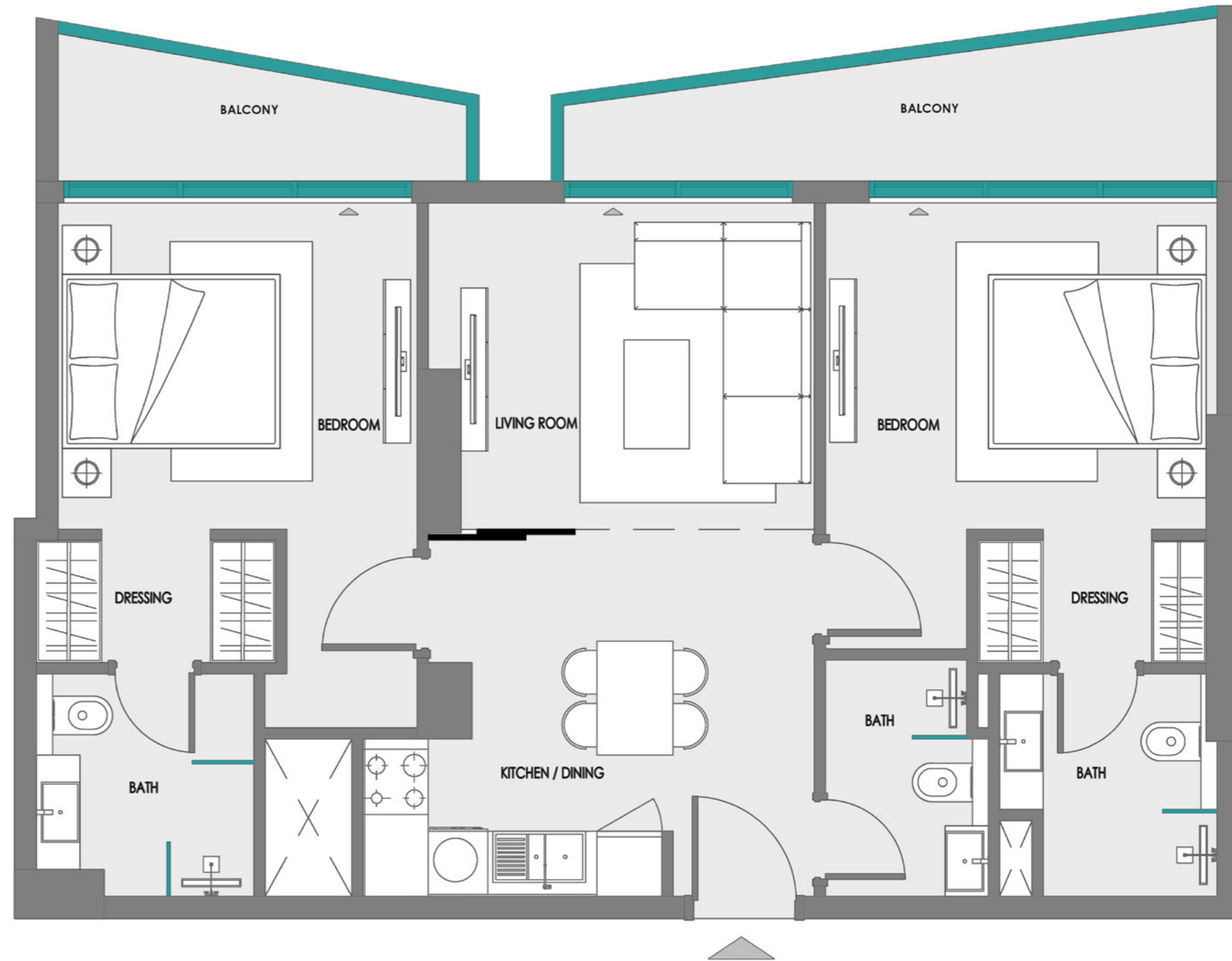
2nd - 14th TYPICAL FLOOR KEYPLAN
UNITS - 221 - 1421



1ST FLOOR KEYPLAN
UNIT - 118

FEATURES

- ✓ CONVERTIBLE 3 BHK

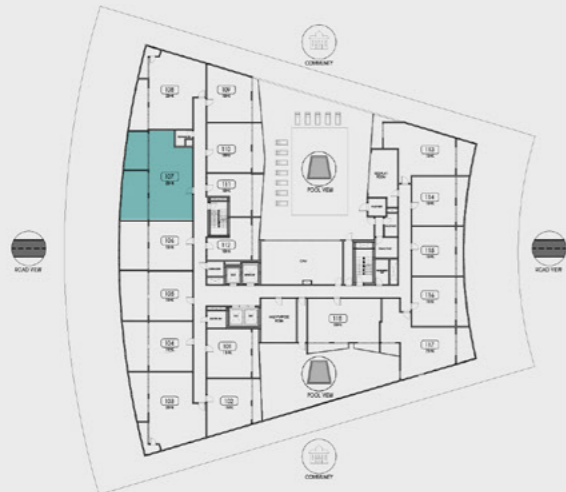


Disclaimer:
 1. All room dimensions are measured to structural elements and exclude wall finishes and construction tolerances.
 2. All dimensions have been provided by our consultant architects.
 3. All materials, dimensions and drawings are approximate. Information is subject to change without notice.
 4. Actual suite area may vary from the stated area. Drawings not to scale. The developer reserves the right to make revisions.
 5. For each unit type, unit sizes and details might be slightly different. Please refer to the sales and purchase agreement for the actual size of each specific unit.
 6. North direction as per the Keyplan

2 BEDROOM + STUDY TYPE 1



2nd - 14th TYPICAL FLOOR KEYPLAN
UNITS - 207 - 1407

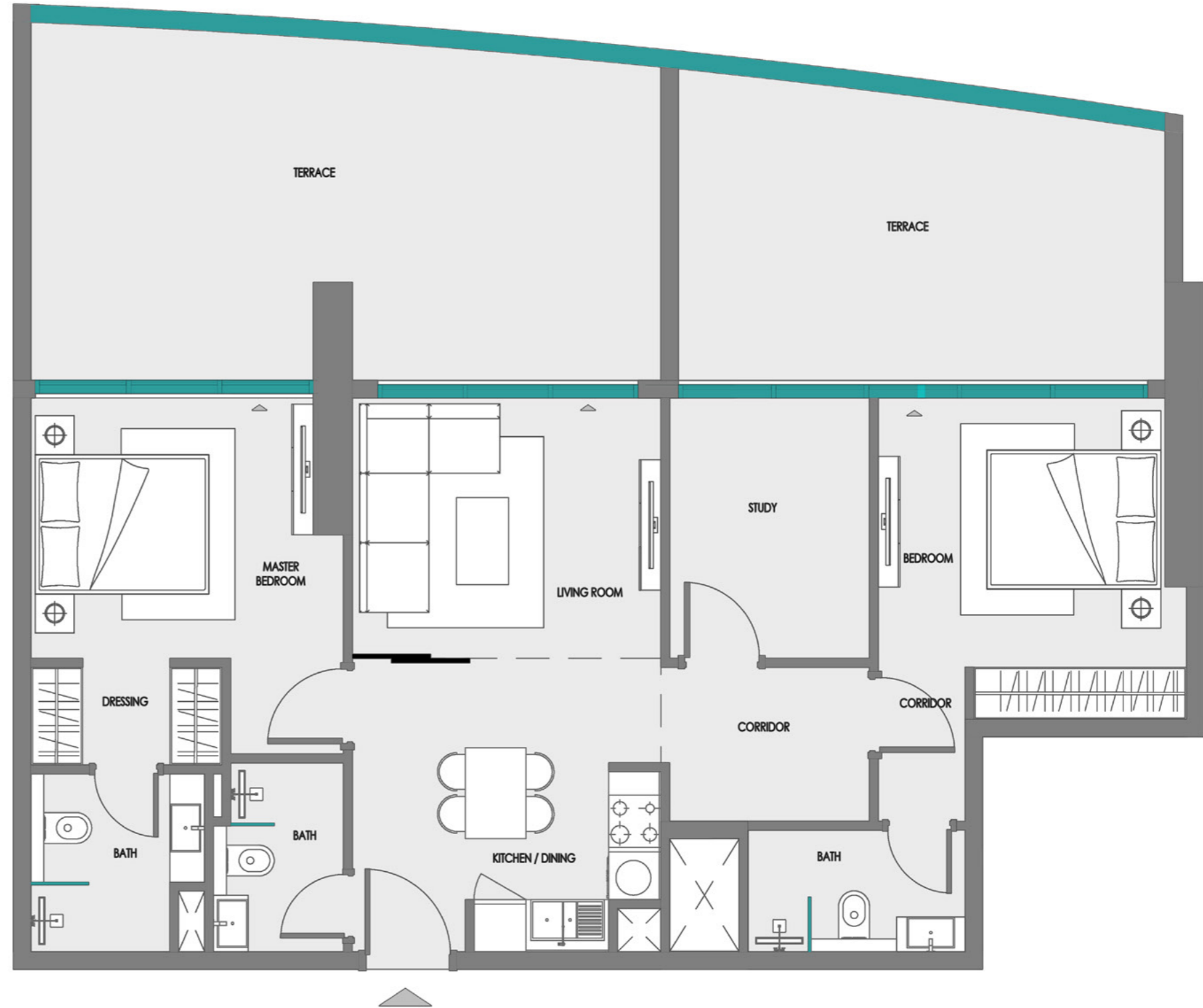


1ST FLOOR KEYPLAN
UNIT - 107

FEATURES

- ✓ CONVERTIBLE 3 BHK

Disclaimer:
 1. All room dimensions are measured to structural elements and exclude wall finishes and construction tolerances.
 2. All dimensions have been provided by our consultant architects.
 3. All materials, dimensions and drawings are approximate. Information is subject to change without notice.
 4. Actual suite area may vary from the stated area. Drawings not to scale. The developer reserves the right to make revisions.
 5. For each unit type, unit sizes and details might be slightly different. Please refer to the sales and purchase agreement for the actual size of each specific unit.
 6. North direction as per the Keyplan



SAMANA
DEVELOPERS